



Ashberry Dunelm Stables

Thornley, Durham, DH6 3BN

£565,000



Introducing this spectacular, custom-built home, meticulously crafted in 2021 and boasting a plethora of high-end finishes. Perfectly blending modern comfort with classic elegance, this architectural masterpiece offers a peaceful retreat without sacrificing the convenience of nearby urban amenities.

Location:
Nestled in a highly desirable plot within Dunelm Stables, a development of homes of a similar calibre, Ashberry sits proudly featuring endless countryside views. With no detail missed and expense spared, this incredible home simply defines luxury and modern family living. Situated in the quiet village of Thornley, the home benefits from major transport links such as the A19 & M1 connecting you to major towns.



About The Property:

From the moment you step inside the grand entrance hall, the quality and craftsmanship are impossible to miss. To your left, a stylish lounge invites you to unwind in elegance. To the right, a chic study as well as a well-placed guest washroom next door. At the heart of the home is a spectacular, bespoke open-plan kitchen/dining space/family space. This bespoke kitchen has been completed with quartz worktops, a central breakfast island, and state of the art appliances, pantry with hidden doors as well as access into the spacious utility room with outdoor access which creates everyday convenience. Bi-fold sliding doors lead directly out to the landscaped rear garden which seamlessly blends indoor and outdoor living creating the ultimate hosting space. The inter-connected light-filled family lounge lies adjacent to the family area and completes this amazing social hub.

The first floor boasts three generous double bedrooms, two with their own luxurious en suite bathrooms. The galleried landing offers great views and a sense of openness. This floor also offers a contemporary family bathroom. The Master Bedroom is truly a showstopper – complete with garden views, a walk-in dressing room and incredible en-suite bathroom featuring a free standing bath as well as a large walk-in shower, his and hers sinks and WC. All bathrooms throughout the property feature top fittings and stylish designs - even each tile adds for a truly bespoke touch.

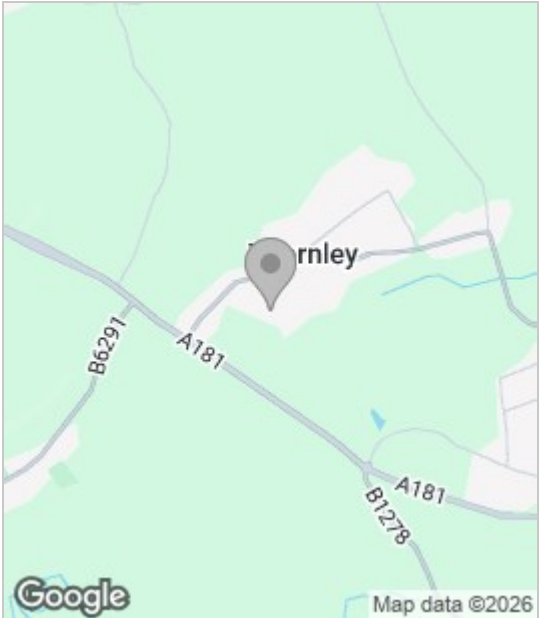
Upstairs on the second floor, you'll discover two more spacious double bedrooms, Each includes premium finishes to provide pure elegance throughout. A gorgeous bathroom lies between the two featuring a double walk-in shower, wash basin and WC.

Externally, the front of the property is beautifully landscaped with a generous driveway, double garage and immense curb appeal.

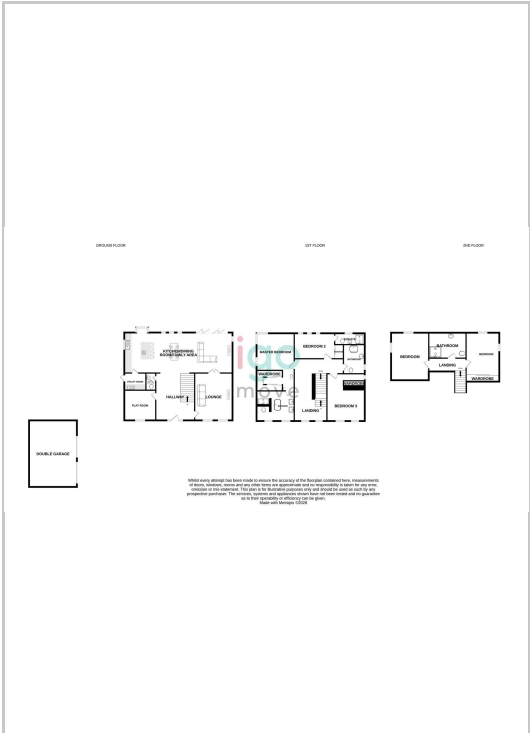
To the rear, the garden has been thoughtfully designed with utmost care and attention. An extensive patio is the perfect space for dining, entertaining, and relaxation.

This is more than just a home - it's a lifestyle opportunity in a class of its own. With bespoke design, generous living space, and luxurious features throughout, this exceptional property is ready for its next chapter. Make this home your own and book your viewing today. Igomove is open 7 days a week.

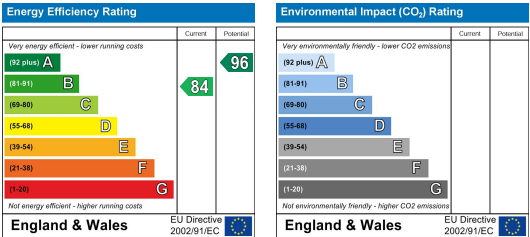
Area Map



Floor Plan



Energy Efficiency Graph



These particulars, whilst believed to be accurate are set out as a general outline only for guidance and do not constitute any part of an offer or contract. Intending purchasers should not rely on them as statements of representation of fact, but must satisfy themselves by inspection or otherwise as to their accuracy. No person in this firm's employment has the authority to make or give any representation or warranty in respect of the property.